

**PART 2**  
**DIGITALIZING SARAWAK WITH BETTER CONNECTIVITY**  
**THROUGH SALURAN INITIATIVE**  
**SALURAN COMPLETED SITES**



**INTRODUCTION**

As mentioned in our Part 1, the 1,043 towers have been planned by Sarawak Government to be rolled out from Oct 2021 to Dec 2022. This will increase the coverage from about 54.2% now to gradually reaching an average of 93.6% in the whole of Sarawak by year end 2022. This means that most parts of Sarawak will have 4G coverage. The remaining 6.4% which are in a very remote and challenging in terms of terrains, topology and technology deployment will be covered from 2023 onwards.

**MySRBN**

In the digital economy, connectivity is a critical enabler. Sarawak Rural Broadband Network (MySRBN) is a project that aims to bridge Sarawak's digital divide between rural and urban areas. Over the years, Sarawakians in remote areas have expressed an increasing need for high-speed internet for home users, not just for communication but also for information, education, business

and tourism purposes. The internet is no longer a luxury, it has become a necessity.

Sarawakians were required to work from home, physical schools were forced to switch to online learning, and businesses were advised to close in order to combat the pandemic. Physical schools have been forced to adjust to online lectures as a result of the COVID-19 issue, generating alarm among students and teachers in rural areas. Thus, MySRBN was implemented urgently to ensure smooth *Pembelajaran dan Pengajaran di Rumah* (PdPR) among rural students.

MySRBN is an initiative that uses Fixed Wireless Broadband (FWB) technology due to its fast deployment in resolving connectivity issues in a short time by capitalizing the existing infrastructure. Since the establishment of Sarawak Digital Economy Corporation Berhad (SDEC) in July 2020, the government has successfully implemented 150 sites (as per table) to connect underserved areas with 4G within 6 months. MySRBN will continue to cover other sites, especially completed SMART towers without

equipment or commonly referred to by the locals as 'ghost towers' or "menara tanpa kualiti" by the first quarter of 2022. The challenge and delay of installing the equipment and "kualiti" on the 'ghost towers' are due to complexities in spectrum allocation, selection of the right technology and system integration. Other contributing factors are the site remoteness and COVID-19 movement restrictions.

**JENDELA**

Prior to COVID-19 pandemic and the Movement Control Order (MCO), the Federal Government of Malaysia has initiated Jalanan Digital Negara, or better known as JENDELA. JENDELA is a comprehensive digital infrastructure plan aimed at solving the increasing needs and desire for better quality fixed and mobile internet coverage throughout Malaysia, especially rural areas.

Under Phase 1 of JENDELA, 71 towers have been completed, while the balance of 742 towers are to be completed by the end of 2022.

**LIST OF 150 MySRBN AND 71 JENDELA SITES WHICH ARE COMPLETED**

**TABLE A MySRBN: COMPLETED**

DISTRICT	SITES
KUCHING	1 BUNTAL
	2 KAMPUNG HAJI BAKI
	3 BATU KITANG
	4 KAMPUNG BAKO
	5 KAMPUNG BENJUK
	6 KAMPUNG KARU
	7 KAMPUNG SANTUBONG
	8 KAMPUNG SEGONG
	9 KAMPUNG DAUN SING GAI
	10 MUJARA TEBAS
LUNDU	11 KAMPUNG BIAWAK
	12 KAMPUNG KERANJI
	13 KAMPUNG SAMPAD
	14 KAMPUNG SEBAT SEMATAN
	15 TELOK MELANO
BAU	16 JALAN TAITON
	17 KAMPUNG APAR
	18 KAMPUNG STASS2
SAMARAHAN	19 KRCKONG
	20 SERIKIN
	21 KOTA SAMARAHAN
	22 JLN KPG PINANG
ASAJAYA	23 KAMPUNG ENDAP
	24 JEMUKAN
	25 KAMPUNG BELONG
	26 KAMPUNG RANGAWAN
	27 KAMPUNG TANJUNG APONG
	28 MOYAN LAUT
	29 SADONG JAYA
	30 SEMERA
	31 TAMBIKAT
	32 ASAJAYA
SIMUNJAN	33 GEDONG
	34 KAMPUNG KEPAYANG
	35 KAMPUNG MANG
	36 KAMPUNG SEGALI
	37 KAMPUNG TEBELU
	38 SIMUNJAN 2
	39 TANJUNG BELUKUK SIMUNJAN
	40 KAMPUNG SEBUYAU
SERIAN	41 BALAI RINGIN
	42 KAMPUNG ENGEROH
	43 KAMPUNG SIMBOH PADAWAN
	44 KAMPUNG MUNGGOL LIMO2
	45 KAMPUNG RASAU
	46 SUNGAI TARAT
	47 TEBAKANG
TEBEDU	48 TEBEDU
SRI AMAN	49 BATU LINTANG SRI AMAN
	50 BUKIT TEMUDOK
	51 KAMPUNG LING GA
	52 LACHAU KARA ROAD
	53 MELUGU
	54 SAN KEMANTAN/ SAN DEMAN
LUBOK ANTU	55 SELEPONG JING GAU
	56 BATANG AI
	57 ENKELILI
	58 KAMPUNG SEBANGKI
BETONG	59 MERINDUN
	60 BETONG
	61 DEBAK
	62 DESA RIA BETONG
	63 JALAN DEBAK
	64 KAMPUNG BUNGIN
	65 PEDANOM
	66 RUMAH BEDURU
SARATOK	67 SPACH
	68 SARATOK
	69 BELADIN
PUSA	70 KAMPUNG SEPINANG
	71 PUSA
	72 KABONG
KABONG	73 KAMPUNG GERIGAT
	74 KAMPUNG KABONG BAZAAR
	75 KAMPUNG PERPAT
	76 SESANG

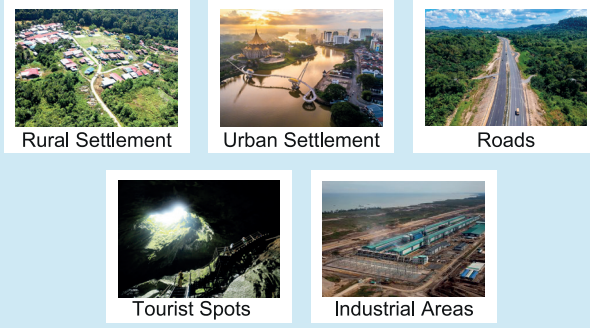
DISTRICT	SITES
SARIKEI	77 KAMPUNG SELALANG
	78 TAMAN SUSUR JAMBU
	79 KAMPUNG SELEMAS
MARADONG	80 KAMPUNG LEBEAN
	81 SUNGAI MADOR
	82 SUNGAI MUPONG
	83 JULAU TOWN
PAKAN	84 PAKAN EXCHANGE
	85 TANJUNG BEKAKAP @ LEBEAN BRIDGE
SIBU	86 TANJUNG MANIS-SIBU ROAD
	87 KAMPUNG MUHIBBAH KANOWIT
KANOWIT	88 MACHAN
	89 NANGA TADA
	90 RUMAH BENYAMIN
SELANGAU	91 RUMAH JAMES / DUAU
	92 SEKUAU
	93 SELANGAU
	94 KAMPUNG SEKAI
MUKAH	95 KAMPUNG TEGAK @ KAMPUNG JEBUNG
	96 PENAT JUJUAN
	97 Balingian TOWN
DALAT	98 BALAJ RAYA KAMPUNG KEKAN
	99 DALAT
	100 KAMPUNG MEDONG
	101 KAMPUNG TAMAN
MATU	102 KAMPUNG JEMORENG
	103 KAMPUNG KUALA MATU
	104 MATU
	105 SUNGAI KUT
DARO	106 DARO
	107 KAMPUNG NANGAR
	108 KAMPUNG PANGTRAY
	109 KAMPUNG SEMOP
	110 KAMPUNG TEKAJONG
	111 PULAU BRUIT
	112 KAMPUNG JERLEH
	113 KUALA RAJANG
	114 TANJUNG MANIS
	115 KAMPUNG HULU NYALAU
	116 MILE 16 BINTULU
117 SUNGAI PLAN	
TANJUNG MANIS	118 TAMAN PERTANIAN SARAWAK
	119 KUALA TATAU
	120 TATAU
	121 BUKIT GCRAM
TATAU	122 HILLTOP KAPIT @ SELIRIK
	123 TAMAN INDAH
	124 ULU KAPIT
	125 BELAGA
BELAGA	126 LONG URUN
	127 SUNGAI ASAP 3
SONG	128 SONG
	129 BAKAM
MIRI	130 KAMPUNG PEMINDAHAN MARUDI
	131 LONG TERAWAN
	132 SUNGAI ARANG
	133 BATU NIAH TOWN
	134 BERENU JUNCTION
	135 BERENU TOWN
SUBIS	136 KAMPUNG SEPURAU
	137 KUALA SIBUTI
	138 SUNGAI NIAH (SEPUROK)
	139 TANJUNG BELIPAT
	140 BELURU
BELURU	141 KAMPUNG PAHLAWAN
	142 KAMPUNG TANJUNG LIMBANG
	143 RIVERSIDE LIMBANG
	144 RUMAH SAID, LIMBANG
	145 TEDUNGAN
LIMBANG	146 KAMPUNG AWAT-AWAT
	147 KUALA LAWAS
	148 LONG TUMA
	149 SUNDAK
LAWAS	150 TRUSAN

**TABLE B JENDELA: COMPLETED**

DISTRICT	SITES
KUCHING	1 JALAN FOO CHOW
	2 DESA WIRA 2
	3 RPR BATU KAWA
	4 KUZU SQUARE (SGH KUCHING)
	5 TAMAN STAMPIN BARAT
	6 KENYALANG PARK
	7 KAMPUNG PANGLIMA
	8 BEVERLY HEIGHTS KUCHING
	9 SUNNY HILL GARDEN
	10 RAMPANGI 2
	11 TAMAN MATANG
	12 KAMPUNG TANJUNG KUCHING
	13 JALAN PISANG BARAT
	14 TAMAN ALAM SARI SAMARIANG
	15 JALAN BANGAU
	16 TAMAN BANJARAN SERAPI
	17 KAMPUNG DEMAK LAUT
	18 GALA CITY
	19 PPR TAMAN INDAH, LANDEH
	20 RIVERVALE RESIDENCE
	SAMARAHAN
22 AEON KUCHING	
23 TAMAN UNI SENTRAL	
24 UITM SAMARAHAN NEW	
25 DEWAN UNIMAS	
26 TAMAN SAMARINDAH 2	
27 UNGARDEN	
28 KAMPUNG SLABI	
29 PEKAN BERATOK	
30 JALAN TANG GA BY-PASS	
SRI AMAN	31 TAMAN MAYFAIR
	32 RIMBUNAN HIJAU HQ
	33 TK MATERIALS
	34 JALAN AU YONG SELATAN
	35 SIBUJAYA 6
	36 SJCC THAI KWANG
	37 SIBU TOWN SQUARE PHASE 2
MUKAH	38 POLITEKNIK MUKAH 2
	39 DARO
	40 KAMPUNG DARO
	41 MAUJAYA
DARO	42 DARO JAYA 1
	43 TANJUNG MANIS HUB
	44 KEMENA INDUSTRIAL 3
TANJUNG MANIS	45 SANCTUARY VILLA
	46 BINTULU PORT
	47 BINTULU PORT 2
	48 BRIGHT WOOD SDN BHD
	49 SUNGAI PLAN 3
	50 PRE-C SDN BHD
	51 SANCTUARY VILLA
	52 SAMARAKAN NURSERY
	53 SCP SEBAUH PALM OIL MILL
	54 LADANG KELIDA
SEBAUH	55 JALAN KUBU
	56 KUALA SUAI
	57 SURAU DARUL AMAN MIRI
	58 JALAN DESA SENADIN MIRI
	59 JLN SEALINE
	60 CURTIN VILLAGE 2
	61 DESA INDAH LORONG MURNI 1A
	62 RIVER VIEW PARK
	63 TUDAN LORONG PERDANA SC
	64 ST. COLUMBA'S CHURCH, MIRI
MIRI	65 LADANG BINTULU LUMBER TIMBER
	66 LADANG SACHEW
	67 LADANG SUAI
	68 LADANG PELITA BAKONG
	69 KAMPUNG LIMPAKI
	70 TAMAN CAHAYA
	71 KAMPUNG TRUSAN



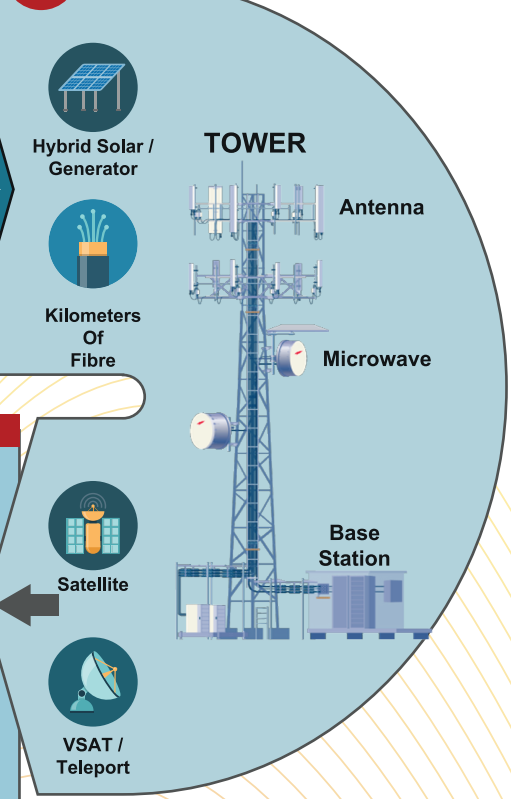
## STEP 1 Identification Of Areas To Be Covered



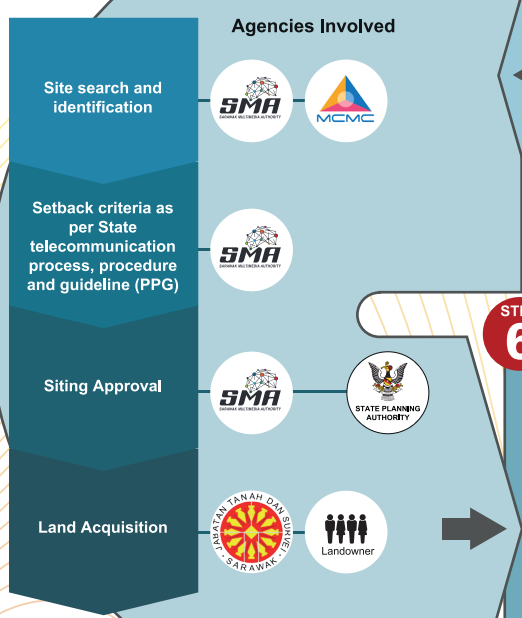
## STEP 2 Factors To Be Considered In Choosing The Right Technology

- 1** GEOGRAPHICAL TOPOLOGY
- 2** DEPLOYMENT COST
- 3** AVAILABLE EXISTING NEARBY INFRASTRUCTURE
- 4** TECHNOLOGY LIMITATION
- 5** TARGET POPULATION

## STEP 3 Infrastructure Requirements



## STEP 5 Site Identification and Land Acquisition



## STEP 4 Choice Of Radio Frequency To Be Assigned

Frequency		
Lower		Higher
<b>Low band (FR1)</b> 450 MHz - 1 GHz Coverage: [3 dots] Speed: [2 dots] 5G, 4G, 3G, 2G	<b>Mid band (FR1)</b> 1 GHz - 7 GHz Coverage: [3 dots] Speed: [3 dots] 5G, 4G, 3G, 2G	<b>High band/mmWave (FR2)</b> 24 GHz - 52 GHz Coverage: [3 dots] Speed: [4 dots] 5G
Higher / Longer <b>Signal Penetration / Distance</b> Lower / Shorter		

Note: Radio Frequency Assignment is Under MCMC

## STEP 6 Challenges in Tower Construction and Equipment Installation



## STEP 7 Service & Customer Management

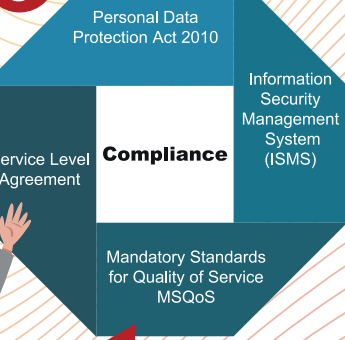


**COMPLETION OF STEP 1 TO STEP 9 TO ACHIEVE CONNECTIVITY**

**As a consumer, I need to know:**

- Am I within the coverage of the nearest tower?
- Is this mobile or home broadband?
- How much do I have to pay?
- Is there a limit to how much data I can use?
- How fast is the internet?

## STEP 9 Compliance



## STEP 8 Operational Challenges



The whole process starting from Service & Customer Management all the way to Compliance is to ensure good and satisfactory service rendered to Sarawakian consumers.

